

# AFINIA H800 3D PRINTER

## UNPACKAGING

for Windows and Mac OS X



### Unpacking Your Afinia 3D Printer

Your Afinia 3D Printer comes with the Installation Disc, Manual (on the installation disc), Unpack and Setup Guide (this document), and Accessories.



The Afinia H800 3D Printer weighs over 40 pounds and should be team lifted.



Remove the power cord and 4 perf boards from the top foam piece.

Remove top foam from the box. Lift the foam ring and plastic bag from around the printer.

With two people, carefully lift the Printer from the box.

Remove the foam between the Extruder and the printer.

Lift the foam sheet below the printer and remove the Accessory Pack, Power Supply, Putty Knife, and Snipping Pliers.

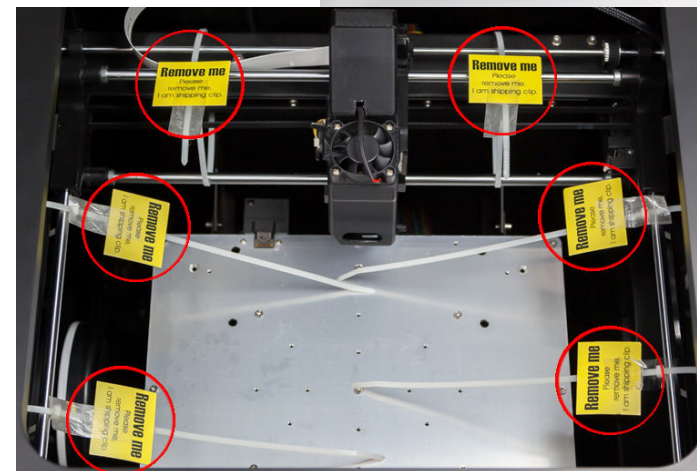
Lift the top cover and carefully lift out the foam above the platform.

Open the front door and carefully remove the two pieces of foam from under the platform. Tip each foam piece back until it is lying flat, then turn the foam counter-clockwise until the left end of the foam is through the door and remove.



Use the snipping pliers to carefully cut the 6 yellow-labeled retaining strap loops from around the Print Head rails. Cut only the straps!

**Save the foam and packaging!**



### Accessory Pack Contents

Next, open the Accessory Pack and verify the contents with those listed below:



1. Filament
2. USB Cable
3. Power Cord
4. Power Supply
5. Putty Knife
6. 2 Plain Perf Boards & 2 Flex Boards
7. Snipping Pliers
8. Nozzle Wrench
9. Spare Nozzle
10. Hex Wrenches

You will need the Filament Spool, Power Supply and Power Cable, and USB Cable to complete the Hardware Setup and Installation. Please follow the instructions on the other side of this document.

For more detailed information on the Setup and Installation process, please see the Afinia 3D Printer User's Manual on your installation disc.



# AFINIA 3D

# AFINIA H800 3D PRINTER

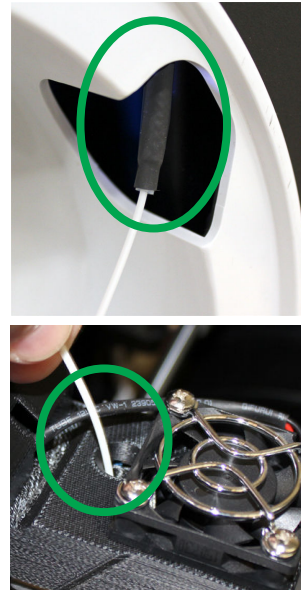
## INSTALLATION & SETUP GUIDE

for Windows and Mac OS X

To install and set up your Afinia 3D Printer, please follow these steps:  
For more information, please see the Afinia 3D Printer User's Manual!  
(the Manual is on the installation disc)

### 1. Setting Up the Printer

- Connect the power adapter to the power interface and turn on the power switch.
- Press and hold the Initialize button until the printer beeps.
- Thread the filament into the Filament Tube.
- Feed the filament through the tube until about 4 inches of filament extends from the end of the tube.
- Put the ABS plastic spool onto the holder with the end of the filament pointing up from the back and replace the magnetic cover.
- Insert about 2 inches of the end of the filament into the extruder feed tube, just behind the fan.
- Long-press the Filament button. The extruder will run when the nozzle is hot enough.



### 2. Install the Software and Drivers

#### Mac

Insert the Installation Disc into your Mac. Open the disc, go into the **Mac** folder, and double-click the **Afinia Mac Setup.pkg** icon. Follow the prompts through the installation. The drivers will be added and the Afinia software will be installed to the **Applications** folder.

#### Windows

Insert the Installation Disc in your PC. Start the Afinia 3D Printer **setup.exe** file and install it to the specified directory. Follow the Installer instructions to be sure the drivers and software are in place before connecting the Afinia 3D Printer to the PC.

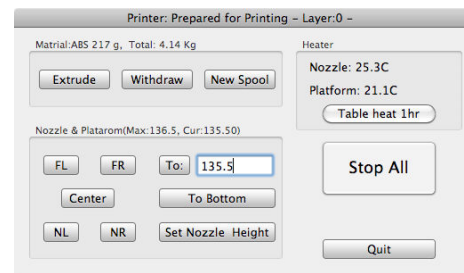
For installation on Windows XP, you will need to manually specify the driver location.

- If you are installing from the Installation Disc, select the disc as the location of the drivers.
- If you are installing from a downloaded installer, the drivers are copied to the **Program files\Afinia\Afinia 3D Printer\Drivers** folder; load the drivers from that location during the hardware installation. For more details on this process, please see the User's Manual.

### 3. Load the Print Material Filament using the Software

This process will be the same on both Mac and Windows.

- Start the Afinia 3D Software (refer to the software install procedure if you have not already installed it), and select **Initialize** from the **3D Print** menu.
- After the Printer has initialized, select **Maintenance** from the **3D Print** menu. Click the **Extrude** button. After the printer nozzle has warmed up to 260° C, the printer will beep.
- Once the nozzle is heated, push the filament into the hole at the top of the extruder head and hold it there with gentle pressure until the extruder motor starts to pull it through. A thin filament of material will extrude for a short period of time.



### 4. Prepare the Platform

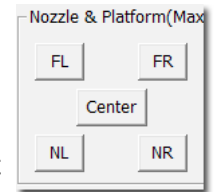
Before you start printing, the platform must be prepared so that the model adheres to the platform enough to be printed without the model moving. There are several options for preparing the platform, such as installing the supplied Perf or Flex boards onto the heater bed, that are discussed in the User's Manual.

Always have the print surface you will be using installed before Leveling or Auto-Leveling.

### 5. Level the Print Platform

To print correctly, the platform must be level. Perform the following steps:

- Open the **Maintenance** dialog box from the **3D Print** menu.
- Click the **To:** button to bring the platform to the height shown, then slowly increment the height until the platform is about 2mm from the nozzle, clicking **To:** after each increase.
- Use the five position buttons to check that the platform at all four corners and the center are the same distance from the nozzle.
- Adjust the platform if the platform is not the same distance from the nozzle at all five points until it is level. Turn the three platform dials until all four corners and the center of platform are all close to the same distance from the nozzle.  
Turning a dial clockwise will raise the platform above that dial.



### 6. Auto-Level the Platform

After physically leveling the platform, run the Auto-Level utility which will help accommodate an uneven print surface.

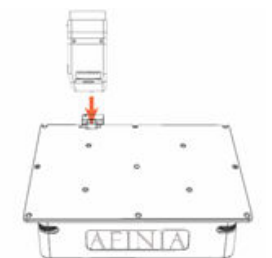
- Select **Auto Level** from the **3D Print** menu.
- The printer will run through a 9-point calibration routine.
- Once the routine is complete, click the OK button to start the Nozzle Height detection.

### 7. Auto-Detect Nozzle Height

The Auto-Detect Nozzle Height will run after the Auto-Level. You can also run **Nozzle Height Detect** manually from the **3D Print** menu.

If you are using a print surface other than the supplied Perf Boards, you must run the Nozzle Height manually.

- Click the OK button after the Auto-Level completes.
- The Printer will raise the platform until the nozzle contacts the height probe.
- PC only:** Select either the Flex board or Perf board option, depending on the board installed.
- The detected nozzle height will be displayed and automatically set for you.



# AFINIA 3D